



IN-BIN SUPER SWEEP

ALL MODELS ASSEMBLY & OPERATION MANUAL



Read this manual before using product. Failure to follow instructions and safety precautions can result in serious injury, death, or property damage. Keep manual for future reference.

Part Number: IM5-R1

Revised: 12/2/10

This product has been designed and constructed according to general engineering standards^a. Other local regulations may apply and must be followed by the operator. We strongly recommend that all personnel associated with this equipment be trained in the correct operational and safety procedures required for this product. Periodic reviews of this manual with all employees should be standard practice. For your convenience, we include this sign-off sheet so you can record your periodic reviews.

Date	Employee Signature	Employer Signature

a. Standards include organizations such as the American Society of Agricultural and Biological Engineers, American National Standards Institute, Canadian Standards Association, International Organization for Standardization, and/or others.

TABLE OF CONTENTS

1. Assembly	5
1.1. Hydraulic Hose Installation	5
1.2. Relief Valve Installation	6
1.3. Assembly	7
1.4. Wheel Move Option	8
2. Operation	11
3. Appendix	13
Warranty Registration	15
Limited Warranty	17

1. Assembly

Warning: Before continuing, please reread the safety information relevant to this section at the beginning of this manual. Failure to follow the safety instructions can result in serious injury, death, or property damage.

The In-Bin Sweep kit consists of (see Figure 1.1):

1. motor
2. motor coupler
3. relief valve
4. 2-16' hoses
5. In-Bin pivot assembly
6. straight section with a walking shoe
7. three plain straight sections
8. 1-15" section
9. In-Bin Tower

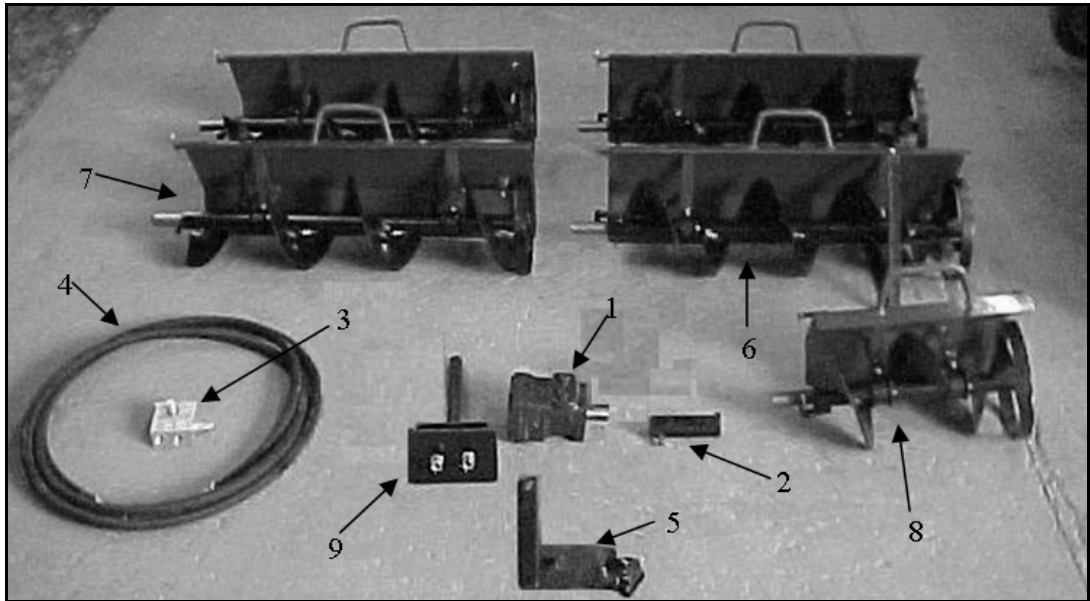


Figure 1.1 In-Bin Super Sweep Kit (Total 11'3" Flighting in Kit)

1.1. HYDRAULIC HOSE INSTALLATION

1. Connect hydraulic hoses between orbit motor and relief valve.
2. Quick couplers may be used on pressure "P" and return ("T" for tank) fittings of the relief valve.

Note: System requires a minimum hydraulic source of 8 gpm at 1200 psi (see Figure 1.2 and 1.3).

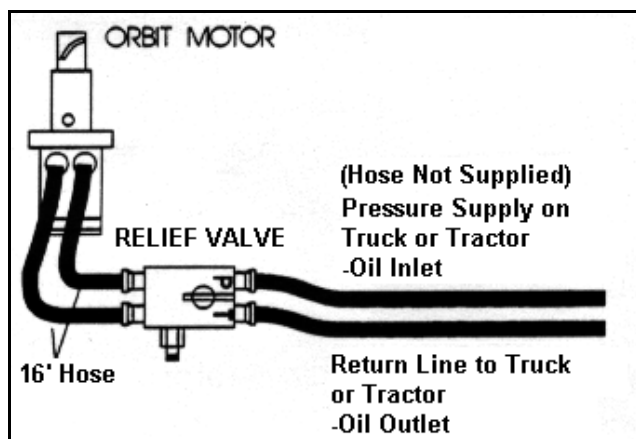


Figure 1.2 Schematic Drawing

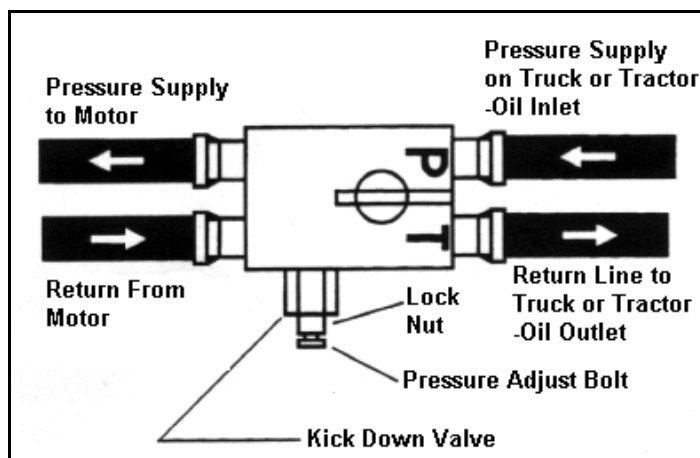



Figure 1.3 Relief Valve

1.2. RELIEF VALVE INSTALLATION

1. The “P” on the relief valve must be connected to the “out” side of the pump (see Figure 1.2 and 1.3) or directly to the “Pressure” source if using a remote hydraulic source.
2. The “T” return or “tank” must be connected to the tank or reservoir of the Bin Sweep.

DANGER	
	<p>Ensure that the return is connected to the tank or reservoir of the Bin Sweep.</p> <p>If it is not, the relief valve will not kick out and serious injury or death can occur to the operator.</p>

3. If the motor turns the wrong way, first verify that the pressure and tank are right, then try again. If motor still turns the wrong way, cross hydraulic lines between valve and motor.

1.3. ASSEMBLY

1. Mount tower over opening in floor and in the center of the bin.
2. Remove hairpin and slide pivot assembly down pivot shaft until it rests on the collar. Mount motor to pivot assembly with 3/8" bolts.
3. Attach special motor coupler to hydraulic motor and then a straight bin sweep section pinning in place. Add on extra straight sections as needed with the last long section having the walking shoe. Add the 15" section to the end, space permitting.
4. Make sure all sections are fully interlocked. The pins on the backboards fit into the hole of the next section and the flighting sections line up to form one continuous auger when twisted into place. (The welded finger on the end of one section of flighting wraps around the spoke on the stationary wheel of the next section.) (See Figure 1.4 and 1.5.)

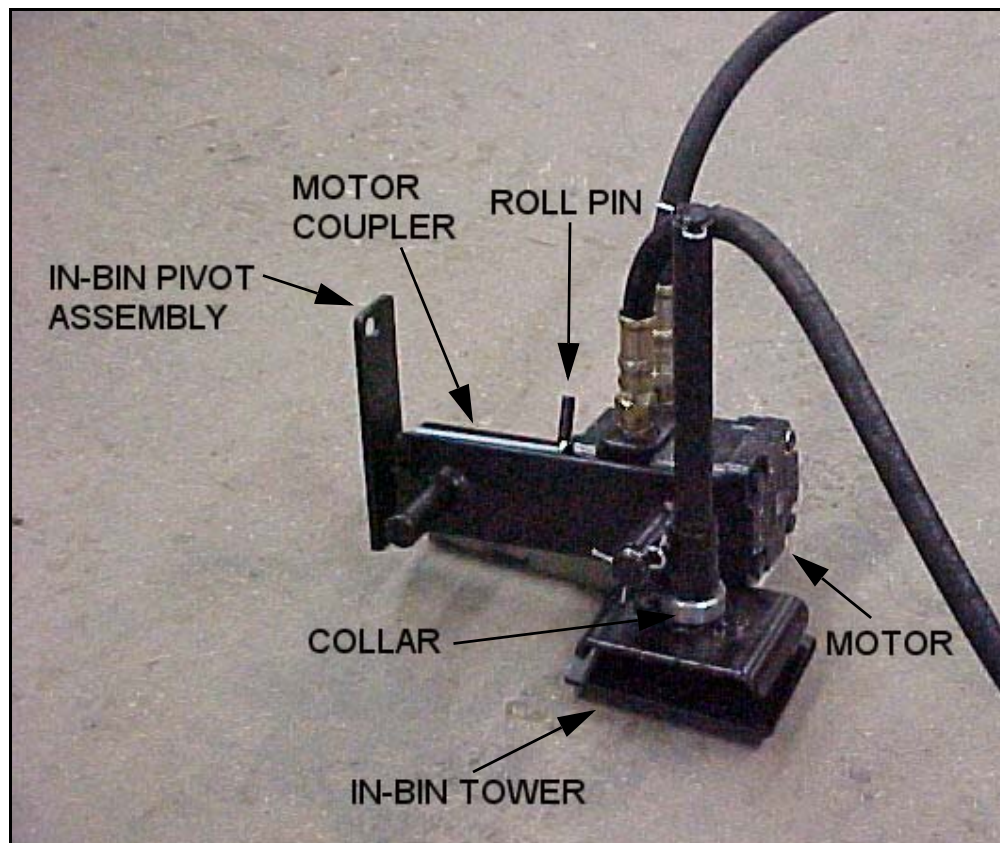


Figure 1.4 In-Bin Tower and Pivot Assembly

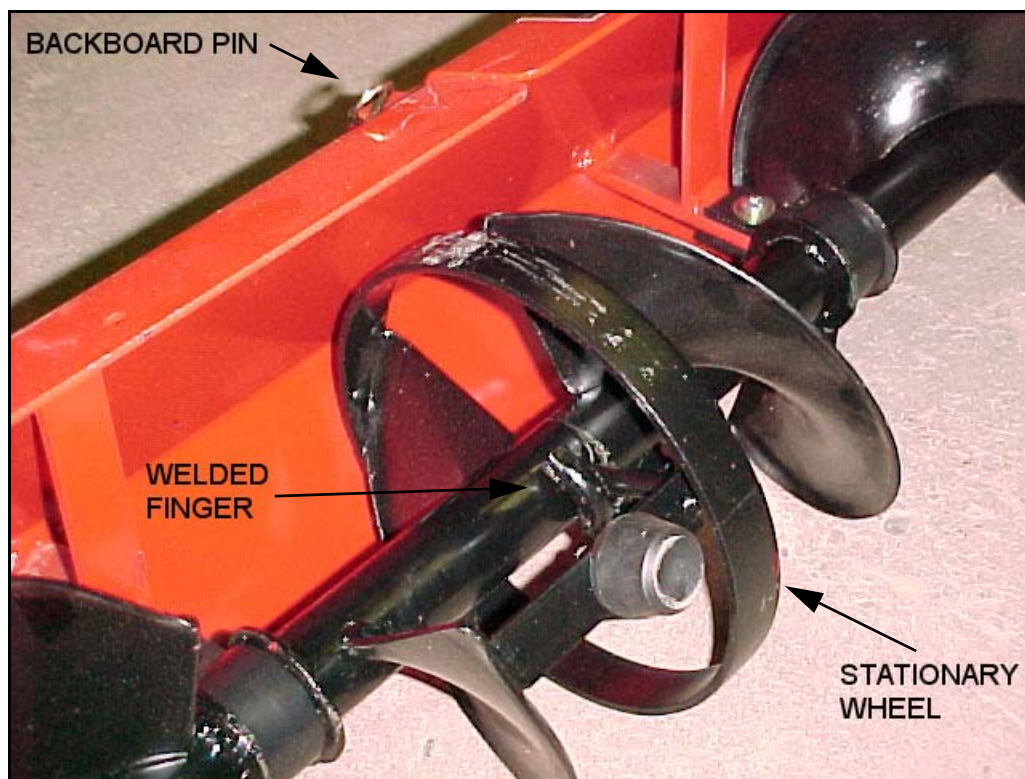


Figure 1.5 Flighting and Backboard Assembly

5. Adjust collar until pivot assembly holds the first sweep section of flighting about 1/8" off the floor (this is level).
6. The pivot assembly can be adjusted up to 10" horizontally in four different positions by means of the two welded pegs and the welded cross pipes, which can be swiveled 180°.

Note: *In severe cases, extra walking shoes can be added to outer sections to prevent tipping.*

1.4. WHEEL MOVE OPTION

1. Assemble on flat surface.
2. Slide the outermost Supersweep backboard over the drivewheel alignment pin and driveshaft.
3. Insert the hairpin to prevent the backboard from sliding back.
4. Place the backboard locking bracket against backboard and over the backboard mount bracket.
5. Mark and drill the hole locations for bolting or welding the locking bracket to the backboard.

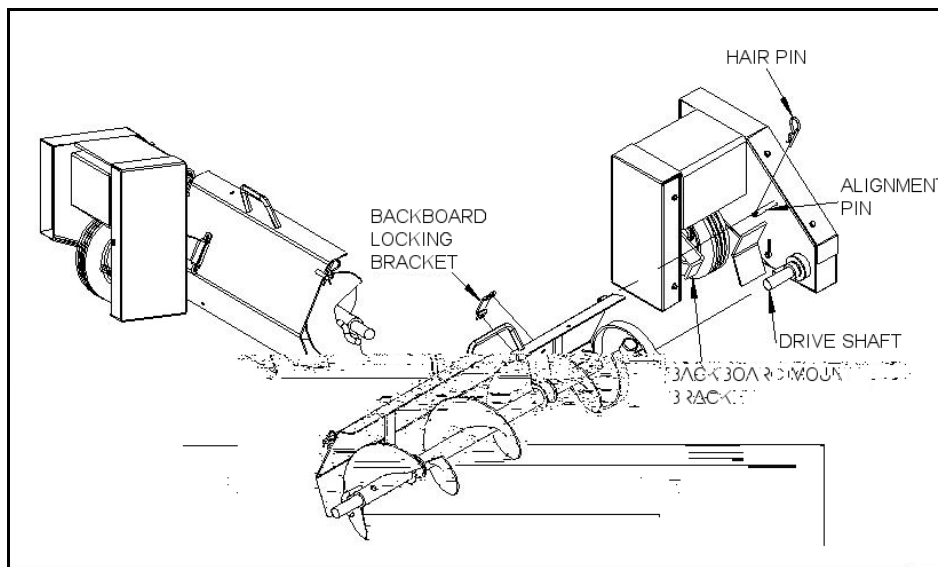


Figure 1.6 Wheel Move Assembly

2. Operation

Warning: Before continuing, please reread the safety information relevant to this section at the beginning of this manual. Failure to follow the safety instructions can result in serious injury, death, or property damage.

Important: *The Super Sweep is an aggressive bin sweep, and when starting the sweep in an in-bin situation, you must slowly lower the flighting down to the floor manually with the backboard handle or the sweep will bury itself down into the grain, kicking out the relief valve and shutting itself off. If this should occur, you will have to dig the unit out by shovel.*

NOTICE

Pulling the bin sweep out of buried grain by force could damage flighting or alignment.

- The collar may have to be adjusted so the Super Sweep runs level. Too high or too low will slow down the Super Sweep (see Figure 1.4).
- The rubber kicker on each section's stationary wheel is adjustable – the further out, the more it drives the sweep forward into the pile. The kicker is adjusted by placing or removing washers between the plate and the kicker (see Figure 2.1).

Note: *Do not adjust the kicker too far out as it will cause excessive wear on the kicker and rough sweep operation.*

In case of drag on bin sweep sections, check for build up of material around bushings (ice, mud, etc.) or misalignment of welded bushing strut.

Some operators prefer to let the bin sweep run twice to reduce the center pile for easier cleanup.

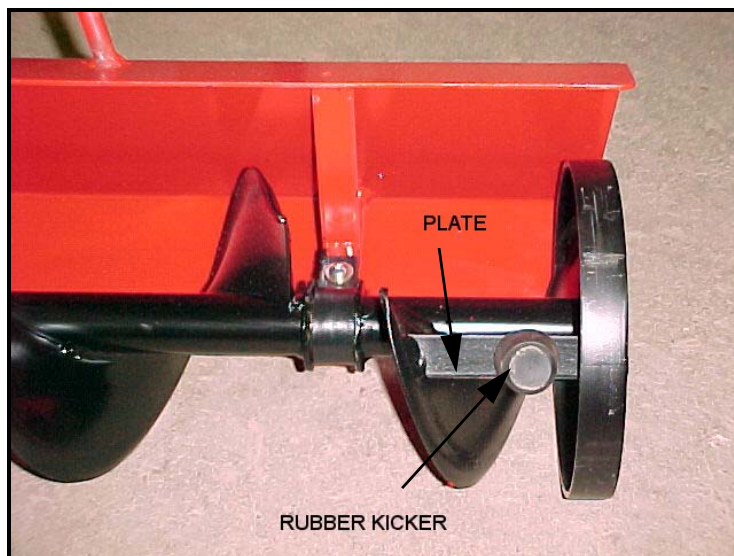


Figure 2.1 Rubber Kicker

3. Appendix

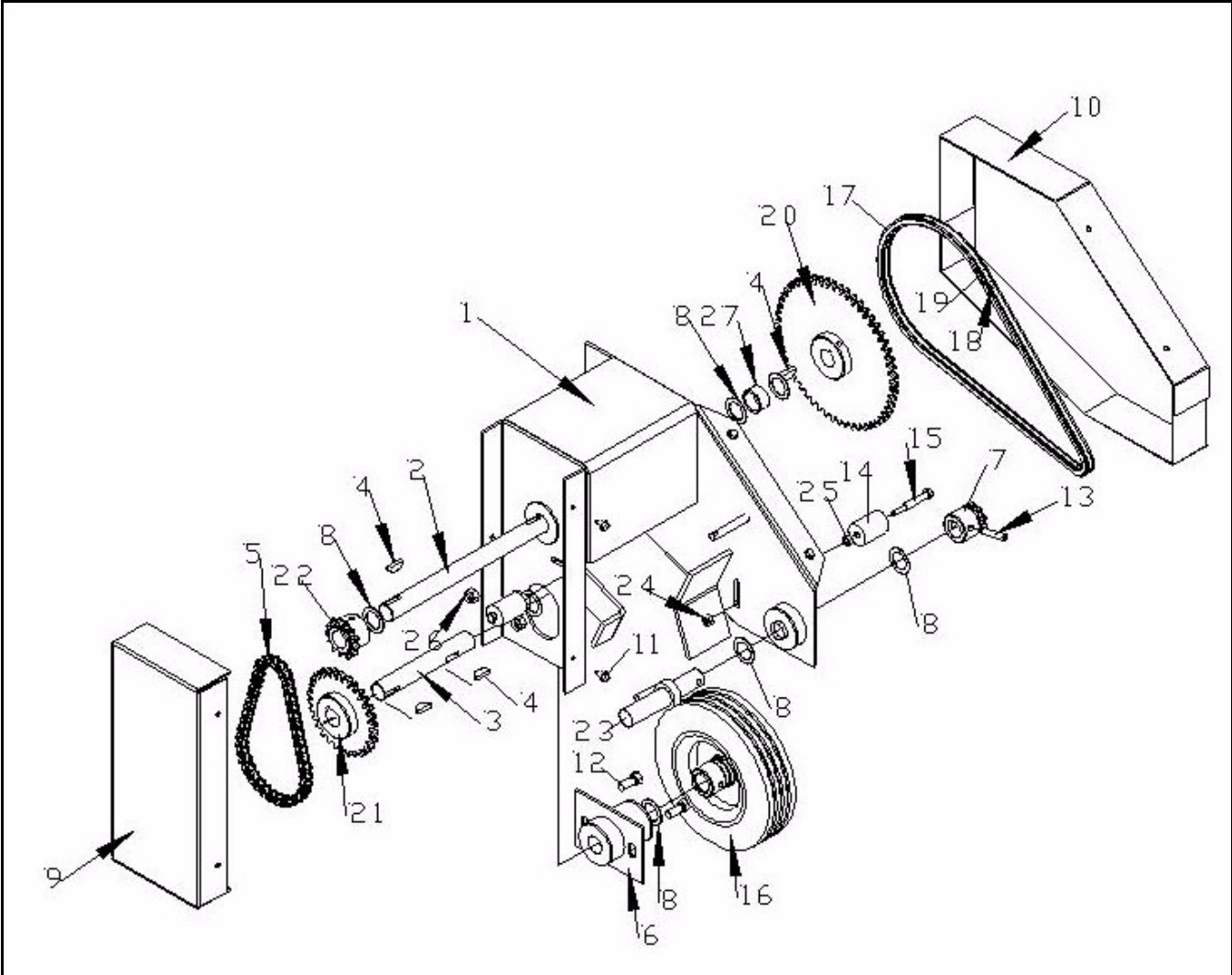


Figure 3.1 Wheel Move Components

Parts List

No.	Qty	Description
1	1	Bin Sweep Wheel Drive
2	1	Top Wheel Driveshaft
3	1	Bottom Wheel Driveshaft
4	4	1/4" x 1" Woodruff Key
5	1	#40 Chain with Connector
6	1	Wheel Drive Axle
7	1	Sprocket Motor
8	7	1" Rim Washer
9	1	Small Drive Shield
10	1	Large Drive Shield
11	6	SMS, #14 x 5/8" With Washerhead
12	2	Bolt, 7/16" x 1" UNC GR5 PLD
13	1	5/16" x 1-1/2" Roll Pin
14	2	Nylon Chain Roller
15	2	Bolt, 5/16" x 2-1/2" UNC GR5 PLD
16	1	Bin Sweep Drive Wheel
17	1	Roller Chain, #40, 39"
18	1	Roller Chain, #40, Half Link
19	1	Roller Chain, #40, Single Link
20	1	Sprocket, with Hub, #40 54T, 1, Key
21	1	Sprocket, with Hub, #40 30T, 1, Key
22	1	Sprocket, with Hub, #40 13T, 1, Key
23	1	Driveshaft
24	2	Nut Nylock, 5/16" UNC GR5 PLT
25	2	Nut Hex, 5/16" UNC GR5 PLT
26	2	Nut Nylock, 7/16" UNC GR5 PLT
27	1	Shaft Spacer



WARRANTY REGISTRATION

Wheatheart congratulates you on your new equipment purchase.
 The warranty registration form must be filled out within thirty (30) days from delivery date and sent to:
Wheatheart Manufacturing
3455 Idylwyld Dr. N., Saskatoon, Saskatchewan S7L 6B5

CUSTOMER COPY	
(Retain this card for warranty and record purposes.)	
PRODUCT:	DEALER'S NAME:
SERIAL #:	ADDRESS:
DELIVERY DATE:	
OWNER'S NAME:	PHONE #:
ADDRESS:	SIGNATURE:
	INVOICE #:
PHONE #:	(Please refer to invoice # when filing claim)

DEALER COPY	
(Retain this card for warranty and record purposes.)	
PRODUCT:	DEALER'S NAME:
SERIAL #:	ADDRESS:
DELIVERY DATE:	
OWNER'S NAME:	PHONE #:
ADDRESS:	SIGNATURE:
	INVOICE #:
PHONE #:	(Please refer to invoice # when filing claim)

WARRANTY REGISTRATION	
(Must be filled out and returned to Wheatheart within 30 days of delivery.)	
OWNER'S NAME:	DEALER'S NAME:
ADDRESS:	ADDRESS:
PHONE #:	PHONE #:
SIGNATURE:	SIGNATURE:
(I acknowledge the product to be whole and in proper working order.)	(I acknowledge the product to be whole and in proper working order. The owner has been given an operation manual and has been informed on proper operation and maintenance.)
PRODUCT: SERIAL #:	DELIVERY DATE:
INVOICE #:	GAS MOTOR SERIAL #:

LIMITED WARRANTY

Wheatheart warrants to the buyer that the new machinery is free from defects in material and workmanship.

This warranty is only effective for any new machinery that has not been altered, changed, repaired, or treated since its delivery to the buyer, other than by Wheatheart or its authorized dealers or employees, and does not apply to accessories, attachments, tools, or parts sold or operated with the new machinery if they have not been manufactured by Wheatheart.

Wheatheart shall only be liable for defects in the material or workmanship attributed to faulty material or bad workmanship that can be proved by the buyer, and specifically excludes liability for repairs arising as a result of normal wear and tear of the new machinery or in any other manner whatsoever, and without limiting the generality of the foregoing, excludes application or installation of parts not completed in accordance with Wheatheart operation manual, specifications, or printed instructions.

A Warranty Registration Form and Inspection Report must be completed at the time of delivery and returned to Wheatheart Manufacturing within thirty (30) days.

Warranty Period

Private Farm Use	One (1) year from date of purchase.
Commercial, Custom, or Rental Use	Ninety (90) days from date of purchase.
Replacement Parts	Ninety (90) days from date of replacement

Defective parts are subject to inspection by a Wheatheart representative prior to approval of a warranty claim. All returned parts must be sent to the factory, freight pre-paid, in order to qualify for warranty replacement. Repaired or replaced parts will be returned freight collect.

If these conditions are fulfilled, Wheatheart shall at its own cost and its own option either repair or replace any defective parts provided that the buyer shall be responsible for all expenses incurred as a result of repairs, labor, parts, transportation, or any other work, unless Wheatheart has authorized such expenses in advance. Normal wear and service items such as belts, hoses, flashing, etc. are excluded from warranty.

The warranty shall not extend to any repairs, changes, alterations, or replacements made to the new equipment other than by Wheatheart or its authorized dealers or employees.

This warranty extends only to the original owner of the new equipment.

This warranty is limited to the terms stated herein and is in lieu of any other warranties whether expressed or implied, and without limiting the generality of the foregoing, excluded all warranties, expressed or implied, or conditions whether statutory or otherwise as to quality and fitness for any purpose of the new equipment, Wheatheart disclaims all liability for incidental or consequential damages.

This machine is subject to design changes and Wheatheart shall not be required to retro-fit or exchange items on previously sold units except at its own option.

WARRANTY VOID IF NOT REGISTERED

WHEATHEART

Wheatheart

Part of the Ag Growth International Inc. Group

3455 Idylwyld Drive North

Saskatoon, Saskatchewan, Canada

Phone: (306) 934-0611

Fax: (306) 934-6020

Toll Free: (877) 934-0649 (Canada & USA)

website: www.wheatheart.com

email: sales@wheatheart.com

© Ag Growth International Inc. 2013



Printed in Canada