

ELECTRIC CLUTCH INSTALLATION

1.1. INSTALLING THE ELECTRIC CLUTCH

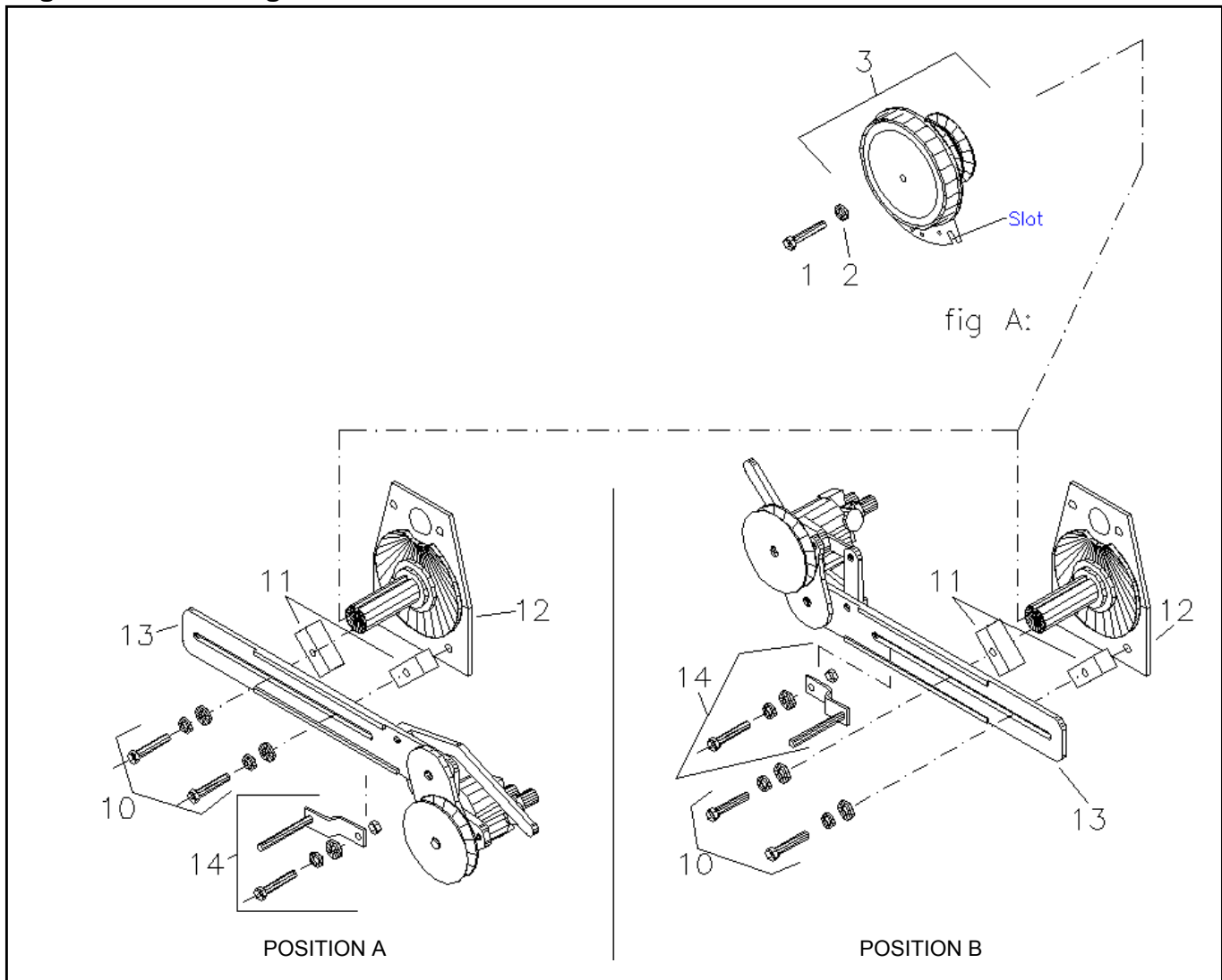
1. Disassemble all existing clutch/pump hardware from the engine shaft, if present.

Important: When installing the electric clutch, it is possible to position the pump on either side of the auger (see Figure 1.1). Always select the pump position that reflects the corresponding drive pulley location for your auger.

2. Mount the hydraulic pump bracket (13) to the engine plate (12) using two 1" x 1" x 2" aluminum blocks (11), and two 3/8" x 2-1/4" bolts, lock washers, and flat washers (10).
3. Slide the electric clutch assembly (3) onto the engine shaft. Re-connect belts on the double pulley, and secure the clutch assembly using a 3/8" x 3" or 7/16" x 3" bolt (1) (engine-model dependant) and lock washer (2).

Note: *When properly adjusted, the electric clutch double pulley should be tight and be unable to slide on shaft.*

4. Position the stop bracket (14) so that machined pin fits into clutch's slot and clutch does not move, and secure the clutch stop bracket onto pump bracket with a 3/8" x 1-1/4 bolt, lockwasher, washer, and locknut.

Figure 1.1 Installing the Electric Clutch

1.2. WIRING THE ELECTRIC CLUTCH

1. Plug the clutch wiring harness into the clutch, and position the other end of the harness in a way that leaves it accessible for external wiring.
2. Connect the switch cable to the clutch, power, and ground (see wiring diagram in Figure 1.2 and Figure 1.3. Use 14 gauge crimp connectors (splice, spade [male], and ground) as required or indicated.
3. Test the switch to ensure that the electric clutch engages and disengages properly.
4. Use electrical tape to seal and secure any electrical connections that might require weather-proofing.
5. Secure the electrical cable to a frame cable-ties or other equivalent fasteners to prevent accidental disconnection of wiring if the cable is pulled tight.
6. Secure the cable when not in use.

Figure 1.2 Electric Clutch Wiring Diagram, Switch Detail

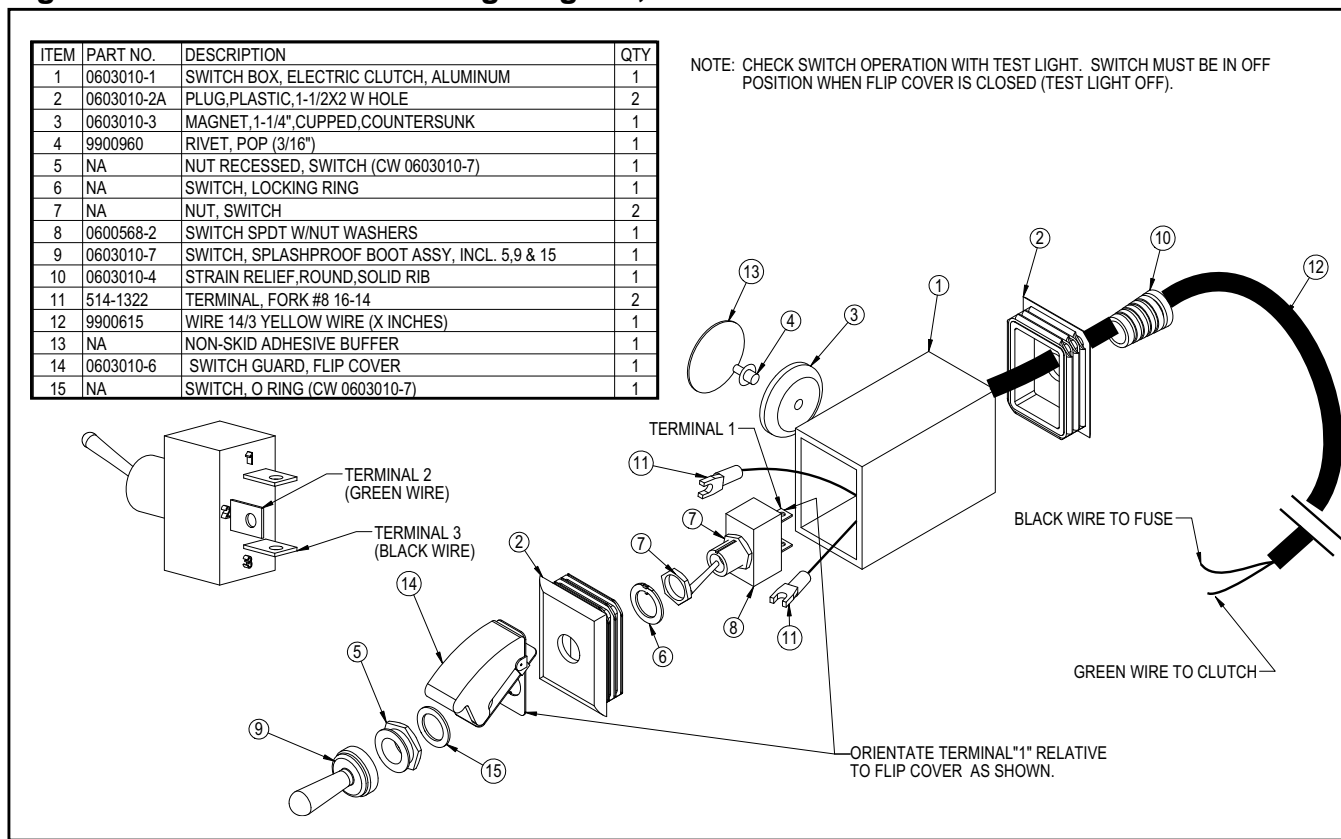
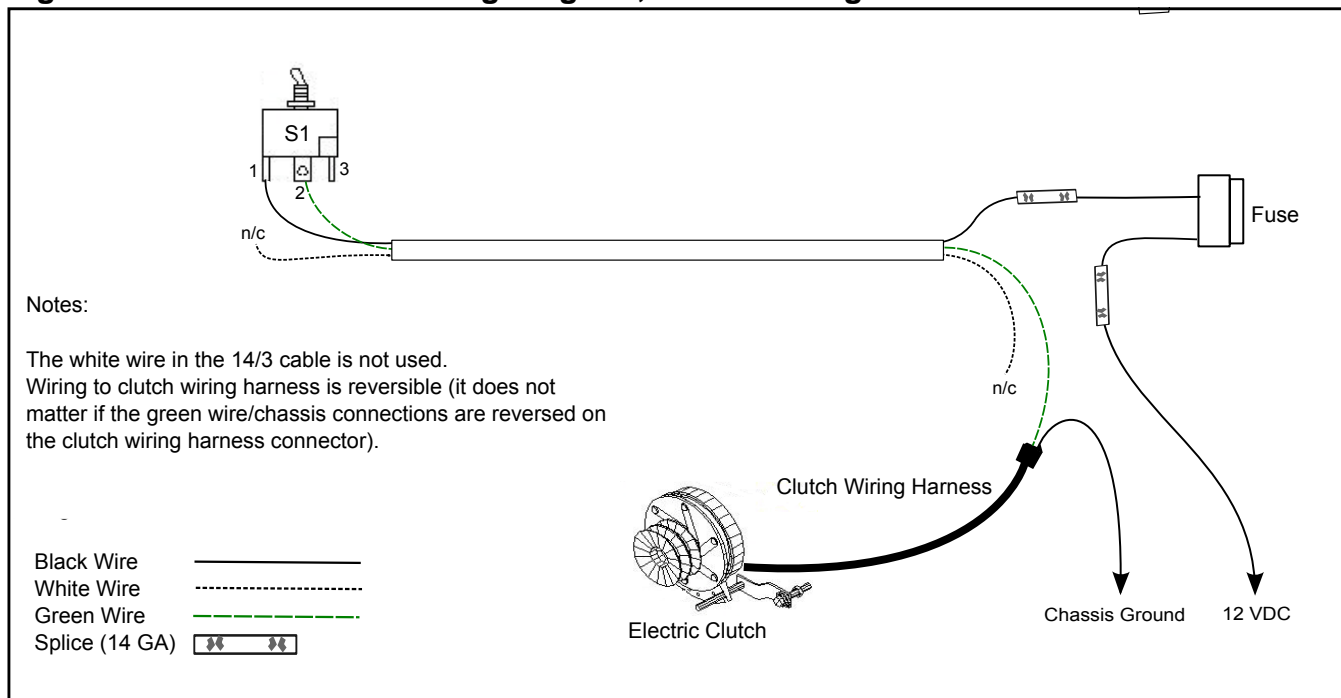


Figure 1.3 Electric Clutch Wiring Diagram, Clutch Wiring



WHEATHEART

Part of the Ag Growth International Inc. Group

P.O. Box 151

902 South St. Road 32

Union City, Indiana

Phone: 1-800-354-9502 or 1-765-964-4631

Fax: (765) 964-3529

Toll Free: (877) 934-0649 (Canada & USA)

website: www.wheatheart.com

email: sales@wheatheart.com

© Ag Growth Industries Partnership 2011

